



Meissen Albrechtsburg Castle

HOW TO GET THERE

A4: Exit Siebenlehn and continue along B 101 or Exit Wilsdruff
A13: Exit Radeburg | A14: Exit Nossen-Ost

Comfortably and quickly from Dresden to Meißen:

- by city rail (S1) every 30 minutes to Meißen-Altstadt station
- by car from Dresden along B6 to Meißen

Alternatively use the Saxon Steamboat service:

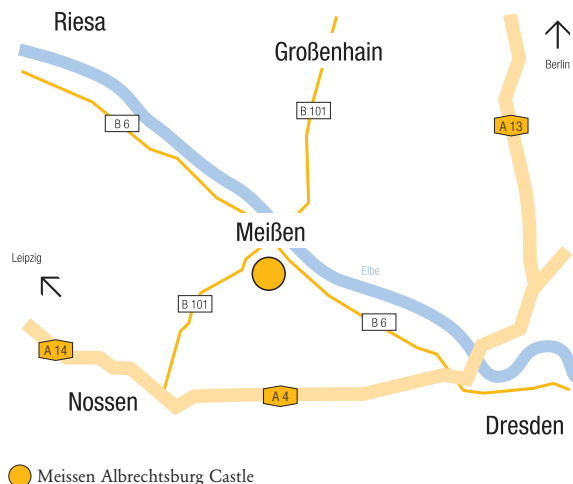
- during the main season departing from the Dresden-Terrassenufer jetty, daily 09:45am

PARKING

At the foot of the Castle Hill. A park deck is available at the elevator in Meisastraße. Further parking on the Elbe River bank with direct access to the castle via the castle park staircase in Leipziger Straße

CITY SIGHTSEEING TOUR

April through October every 30 minutes between the Porcelain Manufactory, Old Town and Castle Hill



OPENING HOURS

March through October daily from 10:00am to 06:00pm
November through February daily from 10:00am to 05:00pm
Also visit our Café and the Museum Shop.

Admission to the Special Exhibition

Adults	€ 6.00
Concession rate	€ 4.00
2 adults + max. 4 children	€ 14.00
Group rate (from 15 people)	€ 5.00

Ticket combined with Permanent Exhibition

Admission	€ 8.00
Concession rate	€ 4.00
2 adults + max. 4 children	€ 18.00

Ticket combining Meissen Albrechtsburg Castle and the Cathedral

Admission	€ 10.50
Concession rate	€ 5.50
2 adults + max. 4 children	€ 25.00



Albrechtsburg Meissen Online

Tip

On tour with the schloesserlandPASS – 1 ticket = 50 locations

- 1 year at € 40.00 or 10 days at € 20.00
 - Pass holders are entitled to visiting 50 venues as often as they like
 - Free admission to all permanent exhibitions
 - Free admission for two children aged 15 or under when accompanied by a ticket holder
- For further information: www.schloesserland-sachsen.de

Concession rates for
the Special Exhibition
“A Treasure –
Not of Gold”



Last reviewed February 2016 | Subject to changes.



Staatliche Schlösser, Burgen und Gärten
gemeinnützige GmbH
Meissen Albrechtsburg Castle
Domplatz 1 | 01662 Meißen
Phone +49 (0) 35 21 47 07-0
Fax +49 (0) 35 21 47 07-11
albrechtsburg@schloesserland-sachsen.de
www.albrechtsburg-meissen.de
[f /Albrechtsburg.Meissen](https://www.facebook.com/Albrechtsburg.Meissen) | [y /Schloesserland](https://www.youtube.com/Schloesserland)

12 MAY — 5 NOVEMBER 2017

Meissen
Albrechtsburg
Castle

A
TREASURE
— NOT
OF GOLD

Benno of Meissen
Saxony's first saint





Stylized depiction of Bishop Benno of Meissen, mural, Meissen Albrechtsburg Castle, 19th century

Meissen Albrechtsburg Castle – Trendsetter since 1471

— Meissen Albrechtsburg Castle, also known as “The cradle of Saxony”, is a place of superlatives and, like no other, stands for the more than 1,000 years of Saxony’s cultural history. The palace building set trends in many respects: as Germany’s oldest palace building of unique architecture that has remained spectacular unto this day, as Europe’s first porcelain manufactory, but also with a multimedia and innovative exhibition that was opened in 2010.

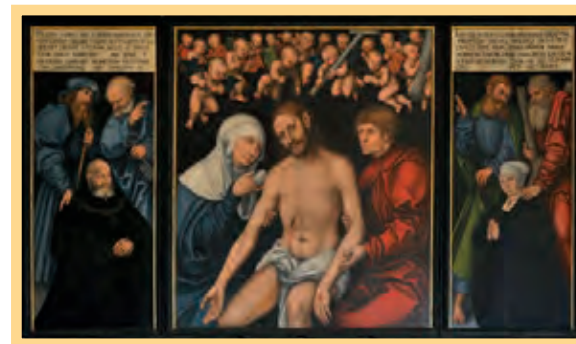
Benno of Meissen – Saxony’s First Saint

— The vita of the first Saxon saint has moved the people in Europe over the centuries – from Saxony via Bavaria down to Rome.

It is a story of power, faith and politics. A story of reformation and counter-reformation, sanctuaries and canonization.

His canonization in 1523, mainly the result on the initiative of Duke George of Saxony, that was instrumentalized from the very beginning by not only the reformers – most notably Martin Luther – for their purposes, and which, in the context of the counter-reformation, led to Benno’s rise to become the land’s patron of Bavaria. Benno is the patron saint of the Catholic Diocese of Dresden-Meissen that was founded anew in 1921.

The story begins in the Meissen Cathedral in the High Middle Ages and extends into the 21st century – with Saint Benno’s omnipresence all over Germany where parish churches, schools and publishing houses bear his name. But also in the German-speaking Catholic church in Rome he has been worshipped as a patron saint since the 16th century.



Triptych in the Burial Chapel of Duke George of Saxony in the Meissen Cathedral, by Lucas Cranach the Elder, 1534, on the left panel: Duke George of Saxony, on the right panel: his wife Barbara of Poland



The Fish Miracle of Benno of Meissen, by Carlo Saraceni in the church Santa Maria dell'Anima in Rome, 1618

— For the first time ever, an innovative exhibition presents the symbol-laden role that Bishop Benno of Meissen and his canonization played in the past centuries. The works and symbolic power of the figure of Benno have exuded radiance up to the present day. The memory of him is a treasure which is worth more than just gold or silver. Sculptures, paintings, priestly garments and gorgeous handwritings on display in the authentic place tell stories of glamor, faith and power. Both innovative media and

historical evidence jointly provide a fascinating insight into the immaterial treasures of the church as well as into everyday life and piousness of the time.

Following in the traces of Bishop Benno

TIP

— Follow Bishop Benno to further historical sites related to him.

Meissen Albrechtsburg Castle with the Cathedral – Where Bishop Benno worked and lived

Stolpen Castle – A kaleidoscope of Meissen Bishops

The Bautzen Cathedral Treasury – A treasury of relics

The Dresden Catholic Court Church – The place of remembrance of Bishop Benno

More information at www.albrechtsburg-meissen.de

Special guided tours

Guided tours of the exhibition are conducted regularly.

More information at www.albrechtsburg-meissen.de